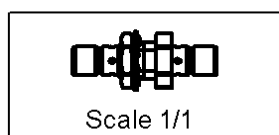
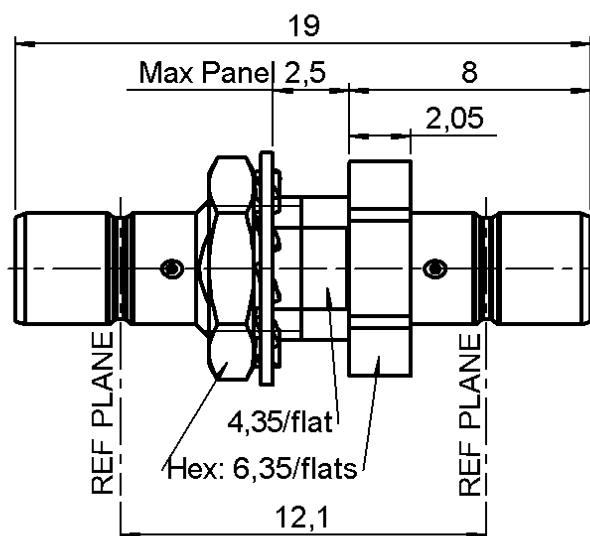
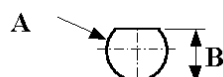
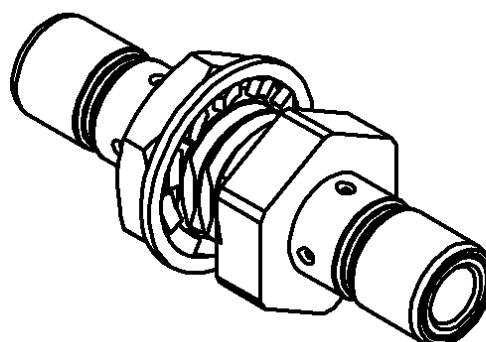


BULKHEAD MALE-MALE ADAPTOR**R114.720.020**Series : **SMB****PANEL CUT OUT**

mm		
	Maxi	mini
A	5	4.9
B	4.55	4.45

All dimensions are in mm.



COMPONENTS	MATERIALS	PLATING
BODY	BRASS	NICKEL 2 µm
CENTRE CONTACT	BRASS	GOLD 0.5 OVER NICKEL 2 µm
OUTER CONTACT	-	- µm
INSULATOR	PTFE	
GASKET	-	
OTHERS PARTS	BRASS	NICKEL 2 µm
-	-	-
-	-	-



Edition : 9850 D

Design changes may be in order to improve the product.

BULKHEAD MALE-MALE ADAPTOR**R114.720.020**Series : **SMB****ELECTRICAL CHARACTERISTICS**

Impedance	50	Ω
Frequency	0-4	GHz
VSWR	1.08 +	0.020 x F(GHz) Maxi
Insertion loss	0.25	$\sqrt{F(\text{GHz})}$ dB Maxi
RF leakage	- (57 - F(GHz)) dB mini
Operating temperature	-65/+165	$^{\circ}\text{C}$
Voltage rating	500	Veff Maxi
Dielectric withstanding voltage	1000	Veff mini
Insulation resistance	1000	M Ω mini

SPECIFICATION**ENVIRONMENTAL**

Hermetic seal	NA	Atm.cm3/s
Leakage – pressurised only	NA	Mpa

OTHERS CHARACTERISTICS

Assembly instruction	NA
----------------------	-----------

Others :

-

MECHANICAL CHARACTERISTICS

Centre contact retention	
Axial force – Mating end	10 N mini
Axial force – Opposite end	10 N mini
Torque	NA N.cm mini
Recommended torque	
Mating	NA N.cm
Panel nut	60 N.cm
Mating life	500 Cycles mini
Weight	0.000 g

**RADIALL®**Edition : **9850 D**

Design changes may be in order to improve the product.